



Crynodeb o'r Adroddiad

Hoffem ddiolch i Ymddiriedolwyr Sefydliad Moondance am y grant o £79,690 y gwnaethom ei dderbyn a llawenydd ym mis Mawrth 2024.

Amcan y cyllid oedd cefnogi ansawdd a chynaliadwyedd Clybiau Gofal Plant All-Ysgol trwy aelodaeth a ariennir a sesiynau gofal plant a chwarae i'r plant mwyaf hyglwyf.

Mae'r amcan hwn wedi'i gyflawni trwy:

Ddarparu aelodaeth wedi'i hariannu'n llawn ar gyfer 853 o Glybiau Gofal Plant All-Ysgol, gan ddefnyddio £46,915 o'r cyllid, gan gefnogi gwell ansawdd a chynaliadwyedd. Trwy aelodaeth, roedd modd i glybiau gael mynediad at lu o adnoddau gan gynnwys bwletinâu wythnosol yn cynnwys diweddariadau ar bolisi/deddfwriaeth perthnasol, hyfforddiant a thempledi polisi/gweithdrefn. Mae aelodaeth wedi ei hariannu yn ogystal wedi gallu hwyluso mynediad lleoliadau at gyngor a chymorth gan ein harbenigwyr brwdfrydig yn y sector, a 676 o sesiynau busnes pwrpasol, 98 ohonynt yn cynnwys cyngor a chymorth ynghylch ariannu.

"Mae ein Swyddog Datblygu Busnesau Gofal Plant wedi ein hannog a'n cefnogi'n wych yn ystod ein cais i fod yn Sefydliad Cofrestredig Elusennol. Ni fyddem wedi gallu gwneud hyn hebdi."

Gyda'r cyllid o £32,775, ein nod oedd ariannu 1,408 o sesiynau chwarae-gyfoethog yn ein cais. Ond rhagorwyd ar y nifer hwn yn ôl 119 o sesiynau. Mae 120 o blant wedi cael cymorth i gael mynediad at gyfanswm o 1,527 o sesiynau chwarae mewn lle Gofal Plant All-Ysgol, rhai na fyddai modd iddynt gael mynediad iddynt fel arfer.



Report Summary

We would like to thank The Moondance Foundation Trustees for the grant of £79,690 that we were delighted to receive in March 2024.

The objective of the funding was to support the quality and sustainability of Out of School Childcare Clubs through funded membership and childcare and play sessions for more vulnerable children.

This objective has been achieved through:

Providing fully funded membership for 853 Out of School Childcare Clubs, utilising £46,915 of the funding; this has supported improved quality and sustainability. Through membership, clubs were able to access a myriad of resources including weekly bulletins containing relevant policy/legislative updates, training and policy/procedure templates. Funded membership has also enabled settings access to advice and support from our dedicated and passionate sector experts with 676 bespoke business support sessions of which 98 have included advice and support on funding.

"Our Childcare Business Development Officer has encouraged and supported us brilliantly during our application to become a CIO. We couldn't have done it without her."

With the funding of £32,775, we aimed to fund 1,408 play-rich sessions. However we exceeded this by 119 sessions. 120 children have been supported to access a total of 1,527 Out of School Childcare play sessions that they ordinarily would not have had access to.





Yn ychwanegol at gefnogi plant a'u teuluoedd, mae'r cyllid hwn hefyd wedi cefnogi cynaliadwyedd y clybiau

"O fudd mawr i'n sefyllfa ariannol gan fod ein niferoedd wedi bod yn isel." (Clwb Gofal Plant All-Ysgol)

Mae adroddiad manwl yn manylu ar yr effaith gadarnhaol y mae'r cyllid wedi'i chael ar blant, eu teuluoedd a Chlybiau Gofal Plant All-Ysgol i'w weld isod.

Gwell ansawdd a chynaliadwyedd trwy aelodaeth

Mae cynnig aelodaeth i bob clwb wedi cefnogi ansawdd a chynaliadwyedd clybiau gofal plant.

- Mae aelodau'n derbyn bwletinawu wythnosol sy'n cynnwys diweddariadau pwysig, adnoddau newydd (e.e. pecynnau cymorth gwrth-hiliaeth a marchnata, cardiau Gweithiwr Chwarae), syniadau am weithgareddau, hyfforddiant, cyflogaeth a chyfleoedd ariannu.
- Newyddlenni chwarterol:
 - <https://bit.ly/4cytYEw>
 - <https://bit.ly/3DamuLb>
- Mynediad at ein tîm o arbenigwyr y sector sydd ag angerdd, gwybodaeth a phrofiad, fel y dangoswyd yn astudiaeth achos LAFS. <https://bit.ly/3OU7Biy>
- Mae aelodau yn ogystal wedi cael mynediad yn rhad ac am ddim at weminarau a digwyddiadau rhwydweithio ar-lein i gefnogi llywodraethiad o ansawdd a chynaliadwyedd, yn cynnwys ymwybyddiaeth o wrth-hiliaeth.
- Hysbysebu gwasanaethau a swyddi gwag am ddim, sy'n arbennig o bwysig wrth i'r sector wynebu heriau o ran deiliadaeth a swyddi gweigion.

Dangosodd ein harolwg bodlonrwydd-aelodau diweddar:

In addition to supporting children and their families, this funding has also supported the sustainability of the clubs

"Very beneficial to finances as numbers have been low." (Out of School Childcare Club)

An in-depth report detailing the positive impact the funding has made to children, their families and Out of School Childcare Clubs is seen below.

Improved quality and sustainability through membership


Membership offered to all clubs has supported childcare clubs' quality and sustainability:

- Members receive weekly bulletins with important updates, new resources (e.g anti-racist toolkit, marketing toolkit, Playworker cards) activity ideas, training, employment and funding opportunities.
- Quarterly newsletters:
 - <https://bit.ly/4cCrO6F>
 - <https://bit.ly/4fgoUoA>
- Access to our team of sector experts with passion, knowledge and experience, as demonstrated in the LAFS case study. <https://bit.ly/3OU7Biy>
- Members have also had free access to webinars and online network events to support quality, governance and sustainability, including anti-racism awareness.
- Free advertising of services and job vacancies, which is particularly important as the sector faces occupancy and job vacancy challenges.

Our recent membership-satisfaction survey demonstrated:





<p>Ar y cyfan mae ein clwb yn fadlon ar y cymorth a'r gwasanaethau y mae wedi ei dderbyn gan Clybiau Plant Cymru Kids' Clubs.</p>	 <p>96% Agree Yn cytuno</p>	<p>Overall, our club is satisfied with the support and services our club has received from Clybiau Plant Cymru Kids' Clubs.</p>
<p>Mae unrhyw hyfforddiant a roddwyd gan Clybiau Plant Cymru Kids' Clubs wedi bod o ansawdd, ac yn hygyrch.</p>	<p>72% Agree Yn cytuno</p> 	<p>Any Clybiau Plant Cymru Kids' Clubs Training received has been quality and accessible.</p>
<p>Mae'r staff wedi bod yn gwrtais a phroffesiynol, ac wedi ymateb i'm ceisiadau am gymorth mewn modd amserol a gwybodus.</p>	<p>95% Agree Yn cytuno</p>	<p>Staff have been polite, professional and have responded to my requests for support in a timely and knowledgeable manner.</p>
<p>Mae unrhyw weminar gan Clybiau Plant Cymru Kids' Clubs, yn cynnwys y Clybiau Hwb, wedi bod yn llawn gwybodaeth ac o gymorth.</p>	<p>70% Agree Yn cytuno</p> 	<p>Any Clybiau Plant Cymru Kids' Clubs webinars including Clwb Hwb have been informative and helpful.</p>
<p>Mae ein clwb wedi cael cyngor priodol (naill ai trwy berson neu gyfathrebu electronig) ar sefydlu a/neu barhau i redeg y busnes gofal plant yn effeithiol.</p>	<p>90% Agree Yn cytuno</p>	<p>Our club has been given appropriate advice (either in person or through electronic communications) to set up and/or to continue to run the childcare business effectively.</p>
<p>Mae gan y clwb fodd i gael hyd i wybodaeth berthnasol ac adnoddau drwy gyfrwng gwefan Clybiau Plant Cymru Kids' Clubs, ei newyddlen a'i e-byst, ac wedi elwa ohonynt.</p>	<p>92% Agree Yn cytuno</p> 	<p>The club has had access to and benefited from relevant information and resources through Clybiau Plant Cymru Kids' Clubs website, newsletter and email communications.</p>
<p>Mae'r clwb wedi elwa o'r wybodaeth ac adnoddau perthnasol a gafwyd trwy gyfryngau cymdeithasol Clybiau Plant Cymru Kids' Clubs.</p>	<p>81% Agree Yn cytuno</p> 	<p>The club has benefited from relevant information and resources through Clybiau Plant Cymru Kids' Clubs social media.</p>





Sylwadau Aelodau:

"Mae'r gefnogaeth rydyn ni wedi'i derbyn wedi bod yn rhagorol. Does dim byd yn ormod o drafferth. Gofynnwn ac fe gawn! Mae'r wybodaeth yn rhagorol ac mae'n rhaid canmol eu hangerdd i sicrhau bod gennym bob peth sydd ei angen arnom. Mae hyn yn cynnwys ein helpu i sefydlu ein clwb, ein cefnogi â grantiau a hyfforddi'r staff â'r cymhwyster Gwaith Chwarae."

"Ni allaf ganmol Clybiau ddigon am eu cyllid sydd ei fawr angen i gefnogi plant, hebdo ni fyddem wedi gallu cynnig ein gwasanaethau i'r plant hyn. Mae'r staff cefnogi yr ydych yn eu hariannu flwyddyn ar ôl blwyddyn yn hollbwysig i ni ac i'r teuluoedd hyn; heb y cymorth ariannol, ni fyddai gan y plant fynediad i'n lleoliad, gan na allwn ariannu staff cefnogi heb eich cyllid chi. Mae'r grantiau rydych chi wedi'u rhoi i ni dros y blynyddoedd i helpu i gadw'r lleoliad yn gynaliadwy hefyd yn hollbwysig, ac mae'r grantiau ar gyfer offer a dderbyniwyd, gyda'r wybodaeth, yn helpu'r holl blant sydd wedi mynychu dros y blynyddoedd."

Gwell hygyrchedd a chynaliadwyedd trwy gynllun grant lleoedd a ariennir

Lansiwyd ein cynllun grant lleoedd-a-ariennir yn y flwyddyn ariannol newydd gan roi mynediad i deuluoedd a phlant, (nad fyddent fel arfer yn gallu fforddio'r ddarpariaeth), i brofiadau chwarae cyfoethog gyda'u ffrindiau, gan gefnogi ymgysylltiad cymdeithasol a lles meddyliol.

Nifer targed y sesiynau trwy gydol y cyllido oedd **1,408** ac er mwyn galluogi cymaint o blant â phosibl i gael mynediad at gyfleoedd chwarae-gyfoethog; gallai Clybiau Gofal Plant All-Ysgol a oedd yn gofrestrdig ag Arolygiaeth Gofal Cymru wneud cais am hyd at 4 sesiwn wedi'u hariannu bob wythnos ar gyfer darpariaethau ôl-ysgol a gwyliau.

Members' comments:

"The support we have received has been outstanding. Nothing is too much trouble. We ask we get! The knowledge is outstanding and the passion to ensure we have everything we need has to be commended. This includes helping us to set up our club, supporting us with grants and training the staff with the Playwork qualification."

"I cannot praise Clybiau enough for their needed funding to support children, without it we would not be able to offer our services to these children. The support staff that you fund, year in, year out is vital to us and for these families; without the funding support, the children would have no access to our setting, as we cannot fund support staff without your funding. The grants you have provided us, over the years to help keep the setting sustainable are also vital, and the grants for equipment received, with the knowledge, help all the children who have attended over the years."

Improved accessibility and sustainability through a funded places grant scheme

Our funded places grant scheme was launched in the new financial year giving families and children, (not normally able to afford provision), access to play-rich experiences with their friends, supporting social engagement and mental wellbeing.

The target number of sessions through the funding was **1,408** and in order to enable as many children as possible access to play-rich opportunities; Care Inspectorate Wales registered Out of School Childcare Clubs could apply for up to 4 funded sessions per week for both after school and holiday provision.





O fewn y 2 fis cyntaf i lansio'r cyllid, fe'i dyrannwyd yn llawn. Gofynnodd 42 o leoliadau am gais i wneud cais am y cyllid, a bu i **35** o leoliadau gyflwyno a chael cyllid.

Dywedwyd yn ein hadroddiad 6 mis i 225 o blant gael mynediad at 1,515 o sesiynau; seiliwyd hyn ar leoliadau'n dweud faint o blant yr oeddent yn gobeithio eu cefnogi.

Yn ymarferol, cafwyd mwy o fudd wrth i blant fynychu mwy o sesiynau, gan gymdeithasu a datblygu cysylltiadau dyfnach â chyfoedion a staff, nag wrth i nifer uwch o blant fynychu llai o sesiynau a rhyngweithio'n llai aml.

Mae'r monitro a ddychwelwyd yn dangos bod – trwy gyfnod y cyllido **120** o blant wedi cael mynediad i gyfanswm o **1,527** o sesiynau Gofal Plant All-Ysgol na fyddent fel arfer wedi bod â mynediad iddynt, gan ragori ar y targed yn ôl **119** o sesiynau.

Er mwyn mesur yr effaith, gofynnwyd i'r lleoliadau ddarparu'r monitro yn achos eu hunain, y plant a'r rhieni ar ddiwedd cyfnod eu grant. Mae'r canlynol yn gasgliad o'r ymatebion yr ydym wedi'u derbyn:

Plant:

Mae pob Clwb Gofal Plant All-Ysgol yn rhoi sylw dyledus i Erthygl 12, Confensiwn y Cenhedloedd Unedig ar Hawliau'r Plentyn lle mae gan blant yr hawl i fynegi eu barn yn rhydd ar bob mater sy'n effeithio arnynt. Mae'n bwysig cael adborth y plant a fynychodd sesiynau chwarae cyfoethog drwy'r cyfnod cyllido hwn. Gofynnwyd cyfres o gwestiynau i'r plant a chafwyd yr ymatebion a ganlyn:

- 100% mwynhau mynychu.
- 78% wedi rhoi cynnig ar rywbeth newydd.
- 93% wedi treulio amser gyda'u ffrindiau.
- 88% wedi cyfarfod â phobl newydd.

Within the first 2 months of the funding being launched, it was fully allocated. 42 settings requested an application to apply for the funding with **35** settings submitting and being awarded funding.

Our 6 month report stated 225 children had access to 1,515 sessions; this was based on settings stating how many children they hoped to support.

In practice, children benefitted from multiple sessions, socialising and developing deeper connections with peers and staff over a higher number of children attending fewer sessions and interacting less frequently.

Returned monitoring has shown through the funding **120** children gained access to a total of **1,527** Out of School Childcare play-rich sessions that they ordinarily would not have had access to, exceeding the target by **119** sessions.

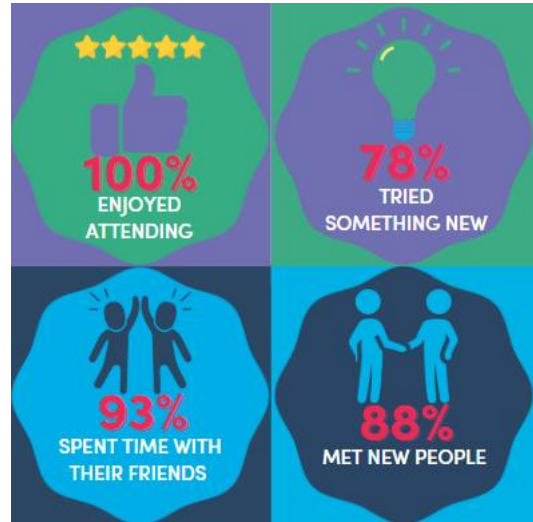
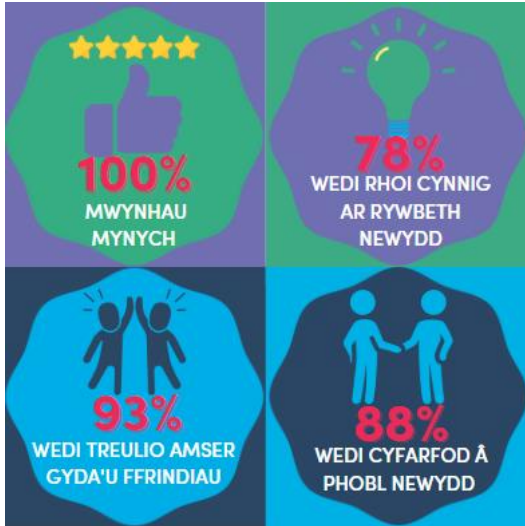
To measure the impact the funded settings were asked to provide monitoring from themselves, the children and the parents at the end of their grant period. The following is a collation of the responses we have received:

Children:

All Out of School Childcare Clubs have due regard to Article 12, UN Convention on the Rights of the Child where children have the right to express their views freely in all matters that affect them. It is important to gain the feedback of the children who attended play-rich sessions through this funding. The children were asked a series of questions with the responses as follows:

- 100% enjoyed attending.
- 78% tried something new.
- 93% spent time with their friends
- 88% met new people.





Pan ofynnwyd "Beth yw eich hoff beth am y clwb?" roedd yr ymatebion yn cynnwys:

"Gwnes ffrindiau ag S ac rwy'n mynd i'w pharti. Fe wnaethom ni freichledi."

"Pan oedd yn bwrw glaw ac fe aethom y tu allan i chwarae ac fe wnaeth fy sanau wlychu."

"Dwi'n dwlu ar allu mynychu'r clwb am fod ganddyn nhw gymaint o stwff llawn hwyl i'w wneud. Dwi'n hoff iawn o'r signenni a chwarae y tu allan gyda'm ffrindiau. Fy hoff beth yw tostio malws melys ar y pwll tân."

Tra mai dim ond "na" neu eu bod yn "hoffi popeth am y clwb" oedd y mwyafrif o'r ymatebion, ymhelaethodd rhai o'r plant ar yr ymatebion hyn:

Roedd un plentyn nad oedd yn hoff o "Dacluso". Ac un arall nad oedd yn hoff o "Fananas fel snac".

Yn achos dau o'r plant yr unig beth nad oedden nhw'n eu hoffi am y clwb oedd: "gorfod mynd adref".

Rhieni:

Dywedodd 100% o'r rieni fod eu plentyn/plant yn mwynhau mynychu'r clwb. Pan ofynnwyd iddynt sut

When asked "What is your favourite thing about the club?" responses included:

"I made friends with S and I am going to her party. We made bracelets."

"When it rained and we went outside to play and my socks got wet."

"I love being able to attend club as they have so much fun stuff to do. I love the swings and playing outside with my friends. My fav is when we do toasted marshmallows on the fire pit."

The children were also asked "Is there anything you do not like about the club?" While the majority of responses to this question just stated "no" or they "liked everything about club", some children expanded on these responses:

One child didn't like "Tidying up." While another didn't like "Bananas for snack."

For two children the only thing they did not like about club was: "having to go home".

Parents:

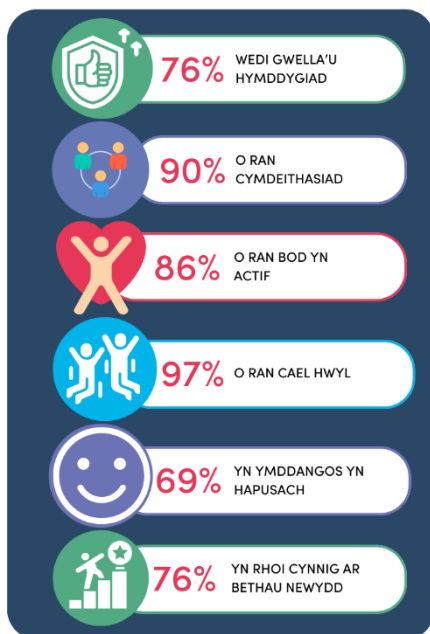
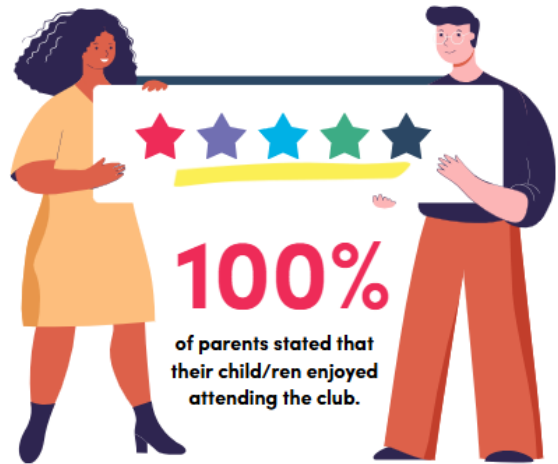
100% of parents stated that their child/ren enjoyed attending the club. When asked how attending

oedd mynd yno wedi bod o fudd i'w plentyn, rhoddwyd cyfres o opsiynau iddynt a nodwyd y buddion canlynol:

- 76% wedi gwella'u hymddygiad
- 90% o ran cymdeithasiad
- 86% o ran bod yn actif
- 97% o ran cael hwyl
- 69% yn ymddangos yn hapusach
- 76% yn rhoi cynnig ar bethau newydd

had benefitted their child, parents were given a series of options and cited the following benefits:

- 76% improved behaviour
- 90% socialisation
- 86% being active
- 97% having fun
- 69% seem happier
- 76% trying new things





Rhodddwyd cyfle hefyd i rieni roi eu hadborth ar y manteision eraill a brofodd eu plentyn/plant; dyma rai o'r ymatebion a dderbyniwyd:

"mae wedi bod yn fwy bodlon gartref."

"Mae'r bechgyn jyst i'w gweld yn hapusach!"

Nid yw'n siarad ond mae'n glir i'w weld ei fod yn dwlu ar ddod i (y Clwb), sydd yn amlwg o'r ffordd y mae'n rhedeg i mewn bob bore heb edrych yn ôl."

"Mae'r lle wedi golygu ei fod, er nad yw'n siarad, yn gallu cyfathrebu ag eraill drwy chwarae a gwahanol fathau o chwarae. Ni allwn fforddio talu am fynychu, felly mae hyn wedi bod yn help mawr i sicrhau fod fy mab yn cael ei drin yn deg a'i fod yn cael yr hawl i chwarae fel yr holl blant eraill."

"Mae (enw'r plentyn) yn blentyn maeth a'i mam fiolegol wedi marw yn ddiweddar. Mae'r opsiwn chwarae yma'n rhoi amser amhrisiadwy iddi i allu cymryd ei meddwl oddi ar bwysau'r byd. Mae ganddi Anhwylder Diffyg Canolbwyntio a Gorfywiogrwydd (ADHD) ac Oediad Datblygiad, ac mae'r clwb wedi gwneud rhyfeddau o ran ei datblygiad. Diolch gymaint."

Gwyddom y gall plant sy'n mynychu Gofal Plant All-Ysgol fod o fudd i'r rhieni hefyd, pan wnaethom ni ofyn sut, dyma a ddywedon nhw:

"Mae gan fy mab Anhwylder Diffyg Canolbwyntio a Gorfywiogrwydd ac mae'r clwb yn gwneud gwahaniaeth enfawr i'n teulu a'm gallu i i ymdopi fel mam sengl."

"Rwyf wedi gallu dechrau'n ôl yn y gwaith eto."

"yn cael amser i roi fy sylw i'r brodyr/chwiorydd iau."

"Rwyf wedi gallu treulio amser gyda'm merch hynaf ar ei phen-blwydd am y tro cyntaf. Ro'n i'n gallu mynd i wneud fy siopa wythnosol. Alla i ddim mynd i siopa gyda'm plentyn ifancaf gan y gall y newidiadau mewn tymheredd a'r atmosffer achosi

Parents were also given the opportunity to feedback on other benefits to their child/ren some of the received responses included:

"has been more settled at home"

"Boys just seem happier!"

"He is non-verbal but it's clear to see he adores coming to (Club), which is evident from the way he runs inside each morning without a backwards glance"

"The place has meant that although he does not speak he can communicate to others through play and different play types. We cannot afford to pay for the attendance so this has been a great help to ensure my son is treated fairly and given the right to play like all the other children."

"(Child) is fostered and her biological mother passed away recently. This play option gives her invaluable time to take her mind off the pressures of the world. She has ADHD and global delay so (club) have worked wonders with her development, Thank you so much."

We know that children attending Out of School Childcare can also benefit the parents, when we asked them how, they said:

"My son has ADHD and this club makes a huge difference to our family and my ability to cope as a single mother."

"I have been able to start back at work"

"time to give younger siblings attention."

"I have been able to spend time with my eldest daughter on her birthday for the first time. I was able to go and do my weekly shop. I cannot go shopping with my youngest as the changes in temperature and atmosphere can induce her





ei ffitiau . Mi ges fynd am goffi a chinio gyda fy mam."

Dyweddodd Lleoliadau Gofal Plant All-Ysgol:

Mae'r cyllid nid yn unig wedi caniatáu cyfleoedd i blant chwarae ond hefyd wedi cefnogi cynaliadwyedd lleoliadau Gofal Plant All-Ysgol.

Pan ofynnwyd sut roedd yr ariannu wedi cynorthwyo'r lleoliad fe ddwedson nhw eu bod wedi cael:

"yr opsiwn i lenwi'r llefydd a oedd ar gael a rhoi cyfle i rieni na fyddent fel arfer yn ein hystyried ni i weld beth rydym yn eu cynnig.

I'r clwb fod yn llawn ar y diwrnodau y mynychodd y plant.

Fe roddodd gyfle i blentyn fynychu yn llawn amser, un na fyddai fel arall â'r modd i fynychu; fe roddodd ganiatâd i ni gadw'r holl staff i gefnogi'r holl blant yn y lleoliad.

Mae gan bob lleoliad a dderbyniodd gyllid bolisi anghenion ychwanegol ac maent yn darparu gwasanaeth cynhwysol. Roedd gan 28 lleoliad (65%) blant ag anghenion ychwanegol yn mynychu'r sesiynau, gan alluogi 39 o blant ag anghenion ychwanegol (33%) yr un cyfleoedd â'u cyfoedion.

Dyweddodd un lleoliad, lle'r oedd gan bob un o'r plant a'i mynychai anghenion ychwanegol, bwysigrwydd darparu gwasanaeth cynhwysol:

"Er mwyn i'r plant ag anghenion ychwanegol fod yn rhan o'r gymuned gyda chyfoedion tebyg iddynt a allai fod â chyflyrau hebyg i'w rhai hwy, ac i allu mwynhau gweithgareddau tebyg i'r rhai y mae eu cyfoedion prif-ffrwd yn eu mwynhau y tu allan i'r ysgol.

Mae hyn hefyd wedi ei gwneud yn bosibl i rieni gyfarfod â rhieni eraill plant ag anghenion ychwanegol ac i gael y gefnogaeth honno gan eu

seizures. I got to have a coffee and go out for lunch with my mum."

Out of School Childcare settings said:

The funding has not only allowed children opportunities to play but has also supported the sustainability of Out of School Childcare settings.

When asked how the funding had supported the setting they stated that they had:

"the option to fill spaces that were open and allow parents who wouldn't usually consider us to see what we offer."

That the club has been full on the days the children attended.

It allowed a child to attend full time, who otherwise would not have attended, it allowed us to keep all staff on to support all children within the setting.

All the settings who received funding have an additional needs policy and provide an inclusive service. 28 settings (65%) had children attending the sessions who have additional needs, enabling 39 (33%) children with additional needs the same opportunities as their peers.

One setting where all the children attending have additional needs stated the importance of providing an inclusive service:

"For the children with additional needs to be part of a community with like-minded peers who may have similar conditions to them and to be able to enjoy similar out of school activities as their mainstream peers do.

This has also enabled parents to meet parents with children who have additional needs and to





cyfoedion nad ydyn nhw'n arferol yn cael mynediad ati.

Er lles y rhieni, iddynt allu gymysgu ac nid teimlo ar eu pennau eu hunain ar eu siwrnai. Gall magu plentyn ag anghenion ychwanegol fod yn brofiad ynysig a negyddol iawn.

Ry'n ni'n troi hynny wyneb-i-waered yn llwyr ac yn croesawu pob rhiant i amgylchedd cadarnhaol iawn sydd yn gyfangwbl ynglŷn â'r hyn y gall eu plant ei wneud a chofleidio eu gwahaniaethau."

Roedd 100% o'r lleoliadau yn meddwl eu bod wedi helpu i gefnogi ymgysylltiad cymdeithasol a lles meddyliol, dywedodd un lleoliad:

Fe wnaeth y grant hwn roi'r modd inni gynnig y sesiynau i blant na fyddent fel arfer yn mynychu'r Clwb Gwyliau. Rhoddodd hyn gyfle iddyn nhw gymysgu â phlant eraill, a oedd yn gefnogaeth i'w hymgysylltiad cymdeithasol. Hefyd cafodd effaith gadarnhaol ar eu lles meddyliol gan y rhoddwyd iddyn nhw gyfleoedd yn y lleoliad na fyddent wedi eu cael fel arall.

Nododd pob lleoliad y gwahaniaeth cadarnhaol yr oedd mynediad i'r sesiynau wedi'i wneud i'r plant a fynychodd. Fodd bynnag, i un plentyn roedd y gwahaniaeth hwnnw'n newid bywyd fel y gwelir o adborth y lleoliad:

"Roedd y plentyn yn bresennol fel y cynlluniwyd am y tair wythnos gyntaf. Ni ddaeth y plentyn â phe cyn bwyd yn ôl y gofyn ac er i ni ddweud wrth y rhieni, parhaodd y plentyn i fynychu heb ginio. Roeddem yn amlwg yn darparu bwyd iddi gan ein bod eisoes yn darparu brecwast a byrbrydau felly roeddem yn gallu gwneud cinio i'r plentyn hefyd.

Erbyn y drydedd wythnos roedd gan staff bryderon diogelu eraill a chysylltwyd â'r Gwasanaethau Cymdeithasol. Daeth Gweithiwr Cymdeithasol y plentyn i weld y plentyn yn (clwb) a chafodd y plentyn ei dynnu o'r teulu a'i roi mewn gofal maeth.

have that peer support that they maybe do not get access too.

For the parents' welfare; to mix and not feel alone in their journey. Bringing up a child with additional needs can be very isolating and a negative experience.

We completely flip that on its head and welcome all parents in to a very positive environment which is all about what their children can do and embracing their differences."

100% of the settings thought they helped support social engagement and mental wellbeing, one setting stated:

This grant allowed us to offer the sessions to children who would not usually attend Holiday Club. This allowed them to mix with other children which supported their social engagement. In addition, it had a positive effect on their mental wellbeing as they were given opportunities within the setting they may not have had otherwise.

All settings noted the positive difference access to the sessions had made for the children who attended, however, for one child that difference was life changing as can be seen from the setting feedback:

"The child attended as planned for the first three weeks. The child did not bring a packed lunch as requested and although we told the parents, the child continued to attend without lunch. We obviously provided food for her as we already provide breakfast and snacks so were able to make lunch for the child too.

By the third week staff had other safeguarding concerns and Social Services were contacted. The child's Social Worker came to see the child at (club) and the child was removed from the family and was placed in foster care.





Rwy'n meddwl ei bod yn wirioneddol bwysig bod y cyllidwr yn gwybod pa mor bwysig yw'r mathau hyn o grantiau.

I think it's really important that the funder knows how important these types of grants are.

Heb y grant hwn ni fyddai neb wedi cael gwybod am sefyllfa'r plentyn hwn."

Without this grant nobody would have known about this child's situation."

Diolch The Moondance Foundation

Thank you The Moondance Foundation

Rydym yn mawrbriso ac yn gwerthfawrogi'r ariannu a dderbyniwyd gan The Moondance Foundation. Y mae wedi galluogi mwy o Glybiau Gofal Plant All-Ysgol i gael mynediad at arweiniad ac adnoddau penodol ar eu cyfer nhw, ac wedi ein galluogi i hwyluso cyfleoedd i'r plant chwarae.

We value and appreciate the funding received by The Moondance Foundation. It has allowed Out of School Childcare Clubs to access bespoke guidance and resources and enabled us to facilitate opportunities for children to play.

