

"DRIVING POSITIVE CHANGE BY EMPOWERING AND LISTENING TO ALL COMMUNITIES IN SOUTH WALES"



De Cymru
Comisiynydd yr Heddlu a Throseddu
Police and Crime Commissioner
South Wales

CHILDREN & YOUNG PEOPLE'S POLICE AND CRIME PLAN



ADULT FACILITATOR INFORMATION

We aim to use feedback from children and young people (CYP) to develop a CYP Police and Crime Plan, which is reflective of the voice, needs, values and experiences of CYP living in the South Wales Police Force area.

To achieve this, we have developed a survey and we are asking partners to support us to make this survey as accessible as possible to children and young people across South Wales.



ABOUT US

Police and Crime Commissioners (PCCs) are elected to help to **hold police forces to account**, to **scrutinise their performance** on behalf of local communities and to **ensure that police funding is spent wisely**. The PCC also sets out policing priorities within a **Police and Crime Plan**.

Emma Wools, as South Wales Police and Crime Commissioner, aims to meaningfully engage with a diverse range of communities to understand their needs and priorities, and to use this to inform our Police and Crime Plan.

In addition to seeking the views of adults, professionals and partners, Emma has also established a working group within her office to focus on **ensuring that the voices of children and young people are heard** and utilised to develop a **Children and Young Persons Police and Crime Plan**, providing child focused solutions to Emma's priorities.

SUPPORTING THE PRINCIPLES OF EMPOWERMENT AND PARTICIPATION OF THE UNCRC



From the child friendly version (UNICEF) of the United Nations Convention on the Rights of the Child (UNCRC)

ACCESS THE SURVEY



ACCESS THE SURVEY



HOW YOU CAN HELP



1 Support children and young people to respond to our survey by holding sessions within your current group to facilitate a shared response. The Children's Commissioner has a toolkit to support you with ways of engaging with children and young people ([Children's Participation Toolkit](#))

2 Offer children and young people within your group the opportunity to complete the survey themselves if they would like to submit a separate response.

3 Share the survey with your networks to widen its reach.

4 Submit the responses (group response / individual responses) fully reflecting the views of the children and young people by **2nd December 2024**.

! We want our survey to reflect the diversity within our communities. If there are specific barriers to engaging with your groups/community that you would like to discuss with our office, please contact engagement@south-wales.police.uk

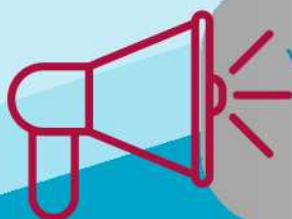
ARTICLE 12

Children and Young People have the human right to express their views and for these opinions to be heard and taken seriously



WHAT WILL HAPPEN NEXT?

- The survey responses will help Emma to understand the priorities of children and young people (CYP) across South Wales.
- We will establish a CYP working group to support us to develop a CYP Police and Crime Plan which centres the priorities and experiences of CYP, informed by the findings of the survey.
- Emma will launch the CYP Police and Crime Plan in May 2025.
- We will continue to work as an office to embed engagement opportunities for children and young people so that our work can continue to reflect the importance of Article 12 of the UNCRC.



IF YOU HAVE A CHILD OR YOUNG PERSON IN YOUR GROUP AGED 11-24 WHO WOULD BE INTERESTED IN BEING PART OF THE ONGOING DISCUSSIONS WITHIN A WORKING GROUP, WITH THE PERMISSION OF PARENTS/CARERS, PLEASE CONTACT: [ENGAGEMENT@SOUTH-WALES.POLICE.UK](mailto:engagement@south-wales.police.uk)

